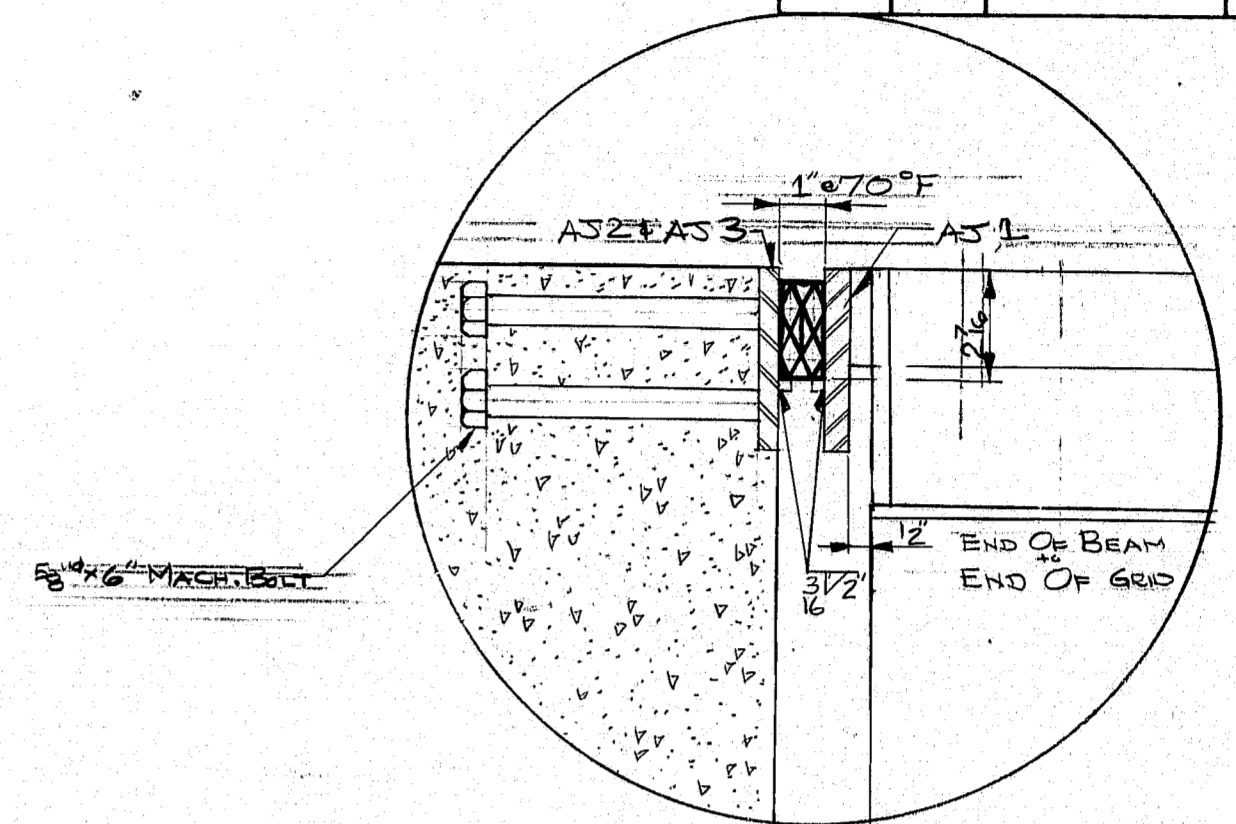
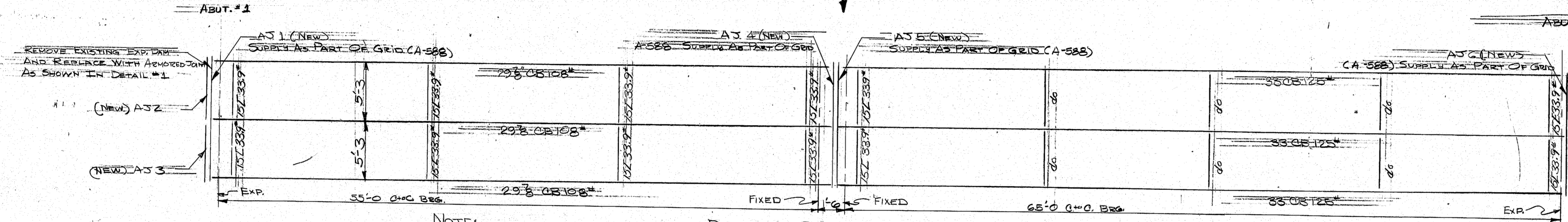


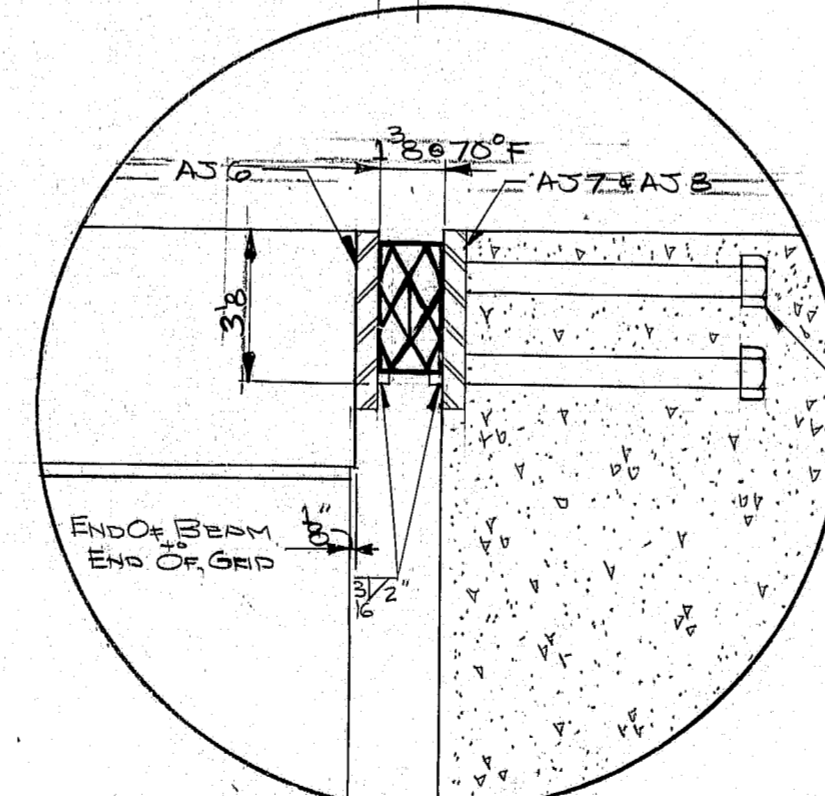
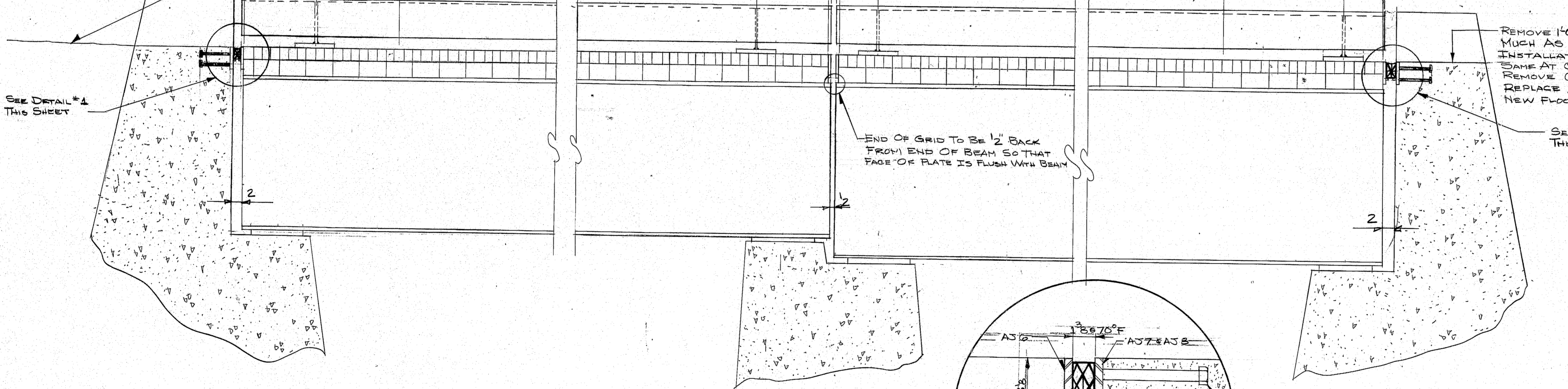
STATE	PROJECT NUMBER	SHEET NO.	TOTAL SHEETS
MAINE		1	



NOTE: (GUARD RAIL POSTS)
 1. EXISTING CABLE GUARD RAIL TO BE REPLACED BY BEAM GUARD RAIL.
 2. EXISTING RAIL PILES TO BE USED.
 3. STRAIGHTEN RAIL POST BRACKETS AS NECESSARY.



FIELD NOTE:
 FINISH GRADE OF BRIDGE HAS BEEN LOWERED APPROX. 1/2' GRADE APPROACHES TO MATCH.



- GENERAL NOTES**
- USE 5' HEAVY DUTY A-588 OPEN STEEL GRID FLOORING, 1829.31 SQ. FT. REQ'D
 - FLOORING TO BE ATTACHED TO STRINGERS ACCORDING TO MANUFACTURER'S RECOMMENDATIONS TO BE SHOWN ON SHOP DGS.
 - SHOP DRAWINGS FOR GRID FLOOR TO BE SUBMITTED FOR APPROVAL BEFORE FABRICATION TO: MAINE DEPT. OF TRANSPORTATION, BRIDGE MAINT. SECTION, TRANSPORTATION BUILDING, AUGUSTA, ME 04333, BY BRIDGE MAINT. ENGINEER.
 - ALL STRUCTURAL STEEL TO HAVE ONE COAT OF RED LEAD PRIMER.
 - MAIN BEAMS OF GRID ARE TO RUN TRANSVERSE TO FLOW OF TRAFFIC.
 - GRADE APPROACHES ACCORDINGLY TO ACHIEVE SMOOTH TRANSITION FROM APPROACHES TO BRIDGE FLOOR.
 - FORMS FOR CONC. FILLED AREA OF GRID FLOOR TO BE FURNISHED BY DEPT. OF TRANS.

STATE OF MAINE
 DEPARTMENT OF TRANSPORTATION

BARROWS FALLS BRIDGE
 OVER
W. BRANCH PISCATAQUIS R.
 IN THE TOWN OF
MONSON
 IN
PISCATAQUIS COUNTY
 OPEN GRID FLOOR

SHEET 1 OF 2
 AUGUSTA, MAINE 12/14/78

PROJECT DESIGN ENGINEER	BY	DATE
DESIGN - DETAILED	(ABD)	12-14-78
CHECKED		
APPROVED		
FIELD CHANGES		

174-104

